



Reviewed on Trip Advisor July 13, 2016

"...Low key, relaxing farm located very near downtown urban area. Take a picnic and stroll through the farm with sheep, chickens, pigs, etc. There's a stream with little fish and great plants/trees. Picnic tables and a wonderful playground. Also very informative employees eager to answer questions and explain anything about the animals. And, my Grandkids, age 6 and 4 LOVE the summer camp. A wonderful way to spend the day on the Eastside."



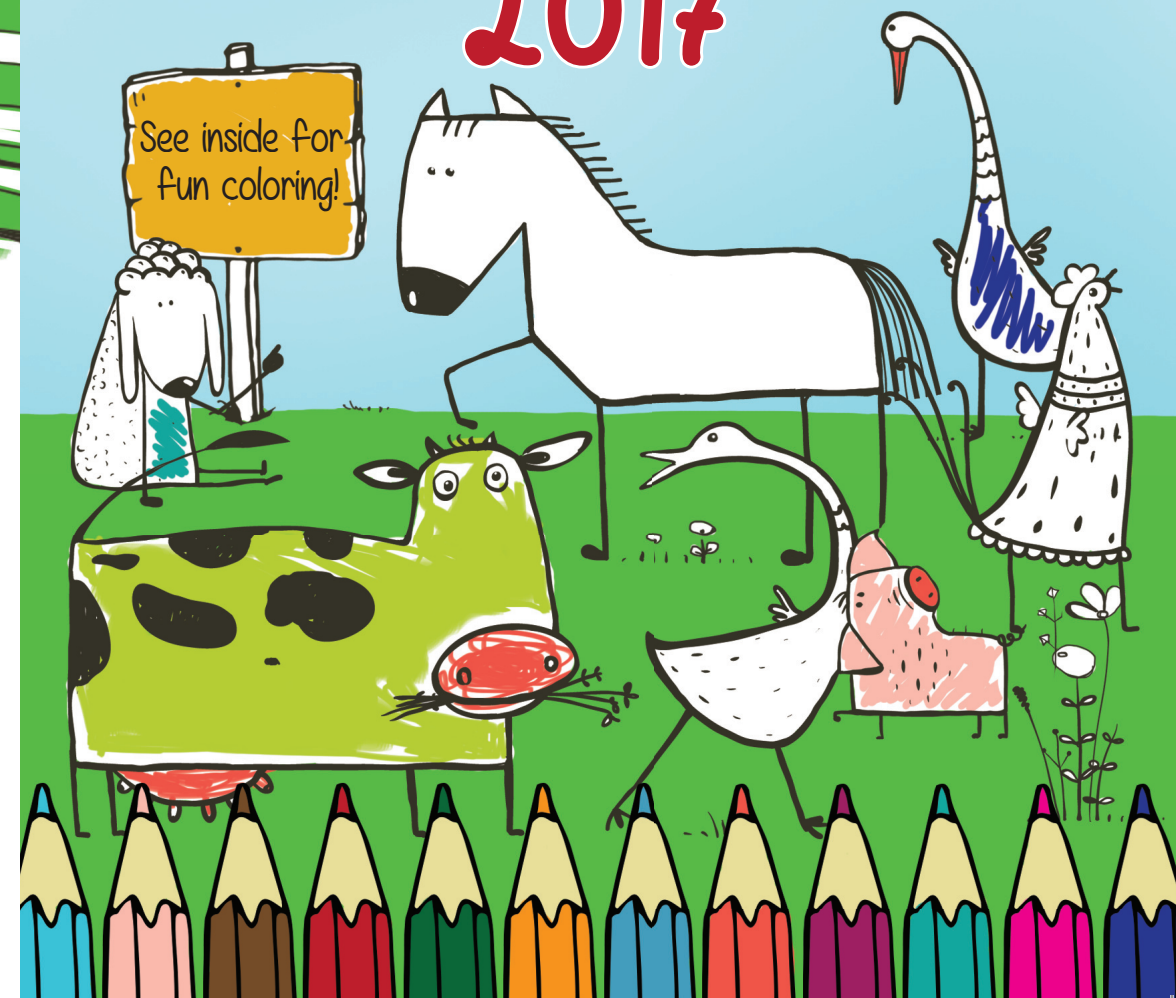
Kelsey Creek Farm
410 130th Pl SE
Bellevue, WA 98005
425-452-7688
KelseyCreekFarm@bellevuewa.gov



Bellevue Parks & Community Services



Kelsey Creek Farm Summer Programs 2017





AT A GLANCE

Visitors cross the threshold of urban living into an agricultural experience. The site provides interpretive displays and education while maintaining the historic integrity of the farm. The farm's two historical barns, that sit prominently on the crest of a hill, now house programs and farm animals. Our programs foster creativity and active play.

There is no entrance fee to the park, however we welcome and appreciate your donations.

When visiting, all dogs and other pets must be kept on a leash at all times. Out of consideration for our farm animals' health and wellbeing, please observe all posted signs prohibiting pets from the barnyard and the feeding of animals.

Kelsey Creek Farm is open from dawn to dusk. Animals are in the pastures daily from 9am to 3:30pm, including weekends & holidays.



Register Online!

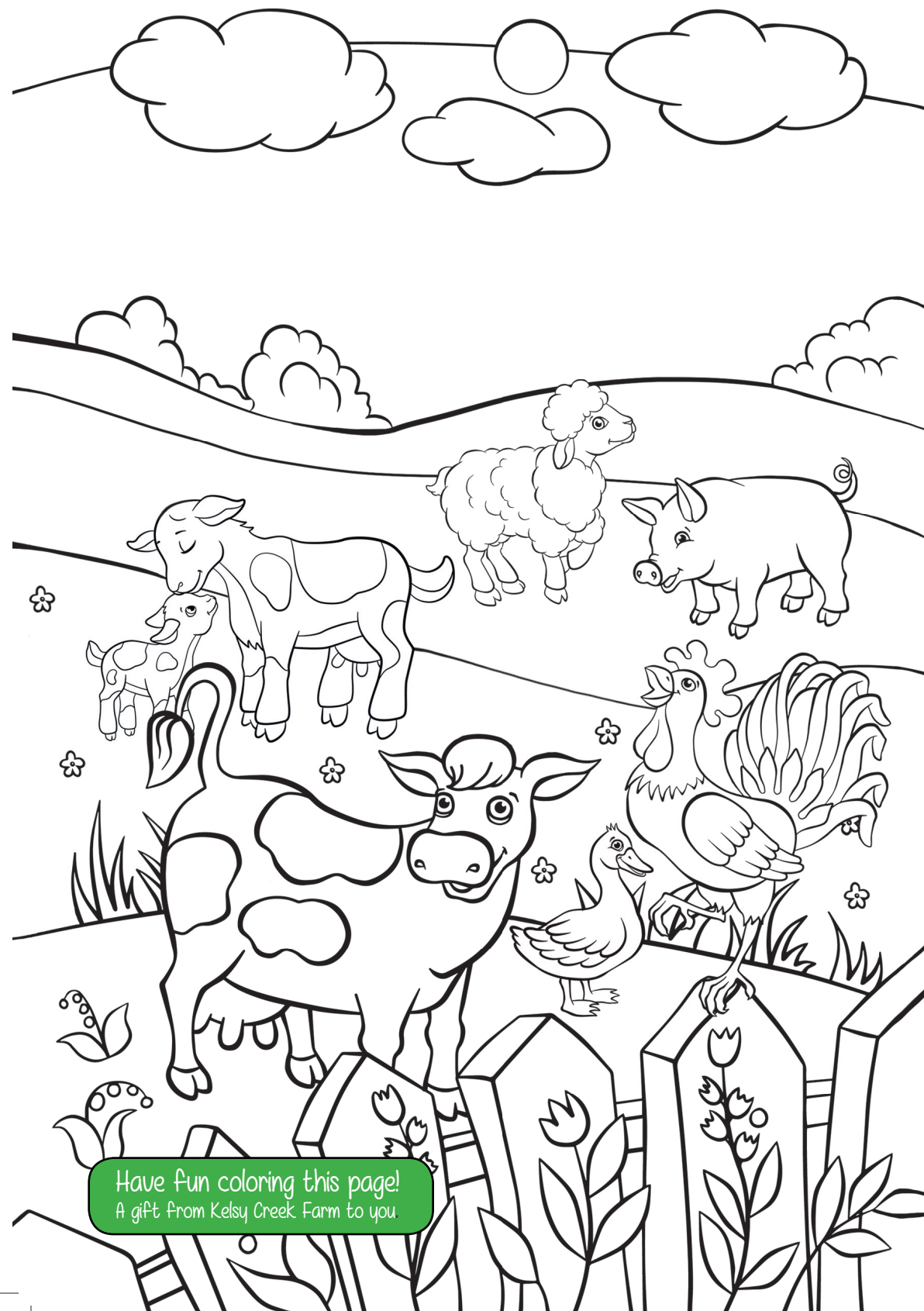
[Http://parksreg.bellevuewa.gov](http://parksreg.bellevuewa.gov)

Scholarships available for many programs.



Wheelchair accessible. American Sign Language (ASL) or other interpretation available upon request. Assisted listening devices available. Call at least 48 hours in advance for any request. 425-452-6884 or Relay Service 711

Disclaimer :
The Bellevue School District does not sponsor nor endorse this event and/or information, nor does the district assume responsibility for it. In consideration of the privilege to distribute materials, the Bellevue School District will be held harmless from any cause of action filed in any court or administrative tribunal arising out of the distribution of these materials, including costs, attorney's fees and judgments or awards.



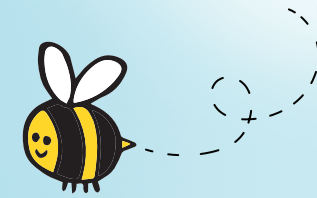
Have fun coloring this page!
A gift from Kelsey Creek Farm to you

🌸 FAMILY EVENTS

🌸 Fraser Cabin Heritage Programs

Presented by the Eastside Heritage Center, in partnership with Bellevue Parks & Community Services. Fraser Cabin, built in 1888 invites visitors to participate in hands-on activities that relate to 1880s settler life; agriculture, dairy, household tasks, log cabins, games and Eastside history.

Ages: All
Hours: 11am-3 pm
Cost: FREE
Dates
Apr. 29
May. 20
Jun. 17
Jul. 15
Aug. 19
Sept. 16



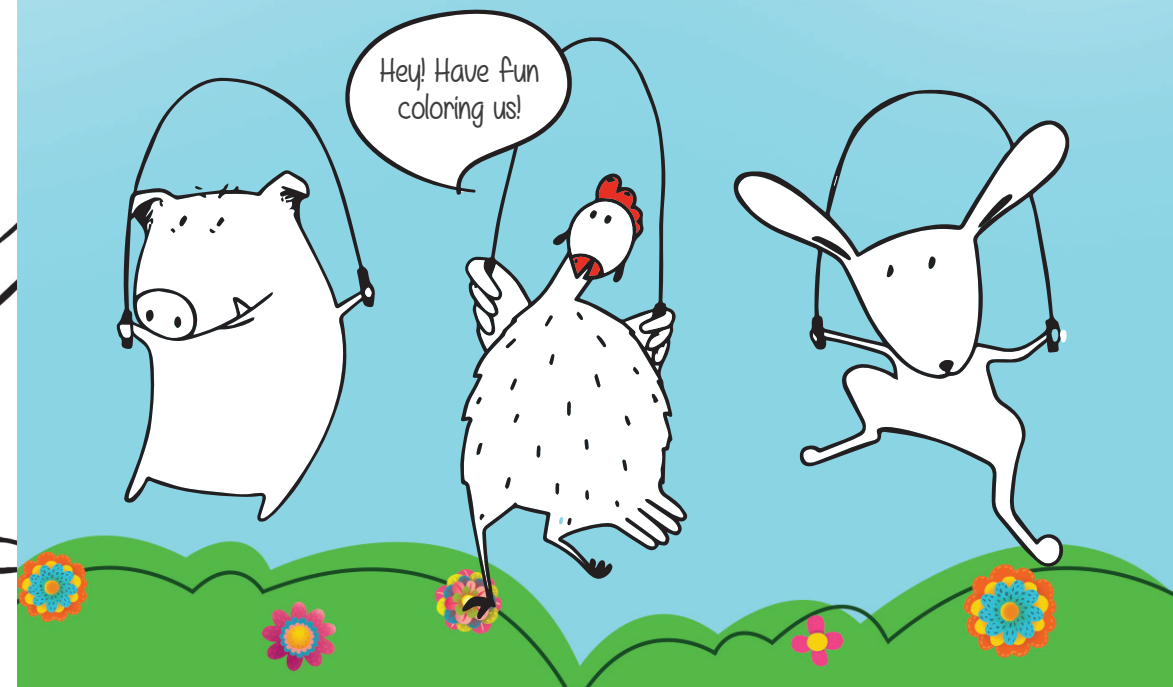
🌸 Summer Kid's Shows

Bellevue Friends of the Library, in partnership with Bellevue Parks & Community Services presents FREE children's events that will be held at Kelsey Creek Farm and Robinswood Parks.

Ages: All
Hours: 11am-noon
Cost: FREE
Dates
July. 11
July. 25
Aug. 8

Location
Kelsey Creek Farm
Robinswood Park
Kelsey Creek Farm

Performer
Eric Ode
Elephant Umbrella
Nancy Stewart



✿ DAY CAMPS/CLASSES

✿ Kelsey Creek & Kid's Connection Day Camps

Imagine the perfect summer day, explore the barnyard, hike a leaf-canopied trail, play active outdoor games, create crafts and make new friends. Experienced, trained staff is dedicated to enriching children's lives, and providing a safe and supportive environment where campers feel connected and understood. The strength of our camp stems from our small group sizes. Each week offers a variety of activities in which children's interests are stimulated. Extended care is available from 7:30am-5:30pm.

Ages: 4 - 6 (Kelsey Creek) / 7 - 10 (Kid's Connection)

Camp Hours: 9:30am – 3pm, M-F

Cost: \$175 (R) / \$215 (N)

Kelsey	Kid's Connection	Themes	Dates
#114703	#114730	Trail Blazers	June 28-30*
#114702	#114731	Carefree Castaways	July 5-7*
#114698	#114732	Out on the Farm	July 10-14
#114699	#114733	Across the Finish Line	July 17-21
#114701	#114734	Mix It Up with Science	July 24-28
#114704	#114735	Time Travelers	July 31 – Aug. 4
#114700	#114736	Barnyard Round-up	Aug. 7-11
#114697	#114729	Beat the Heat	Aug. 14-18

* Short weeks: June 28 - 30 & July 5-7, price adjustment \$105(R) / \$129 (N)

✿ Robinswood Day Camp

Children are empowered to fulfill their unlimited quest for discovery and exploration through active play, imagination and creativity in a safe and caring environment. Children learn cooperation as they play side by side with one another. Your child will be cared for by trained and competent staff in a small group setting. Each week will bring a variety of new and different activities. Extended care is available from 8:30am-5:30pm.

Ages: 4-7

Camp Hours: 9:30am – 3pm, M-F

Cost: \$175 (R) / \$215 (N)

Course #	Themes	Dates
#114762	Wonders of Nature	June 28-30*
#114763	A Pirate's Life for Me	July 5-7*
#114767	Animal Crackers	July 10-14
#114764	Olympic Fun	July 17-21
#114765	Science Discovery	July 24-28
#114766	Time Machine	July 31 – Aug. 4
#114768	Travel the World	Aug. 7-11
#114769	Water Carnival	Aug. 14-18
#114778	Let's Celebrate	Aug. 21-25

* Short weeks: June 28 - 30 & July 5-7, price adjustment \$105(R) / \$129 (N)

✿ Critter Adoptions

Become a Kelsey Creek Critter Parent! Simply call for an application. Care and custody of your critter stays with Kelsey Creek Farm. You can adopt any of the following farm animals: pony, pig, sheep, goose, goat, duck, cow, rabbit, and chicken. Adoption levels are available from \$15 for Best Friend to \$200 for Great Grandparent.

✿ Picnic Shelter Rental

Picturesque working farm with two majestic white barns. Perfect location for small picnics and gatherings. Picnic tables and BBQs available.

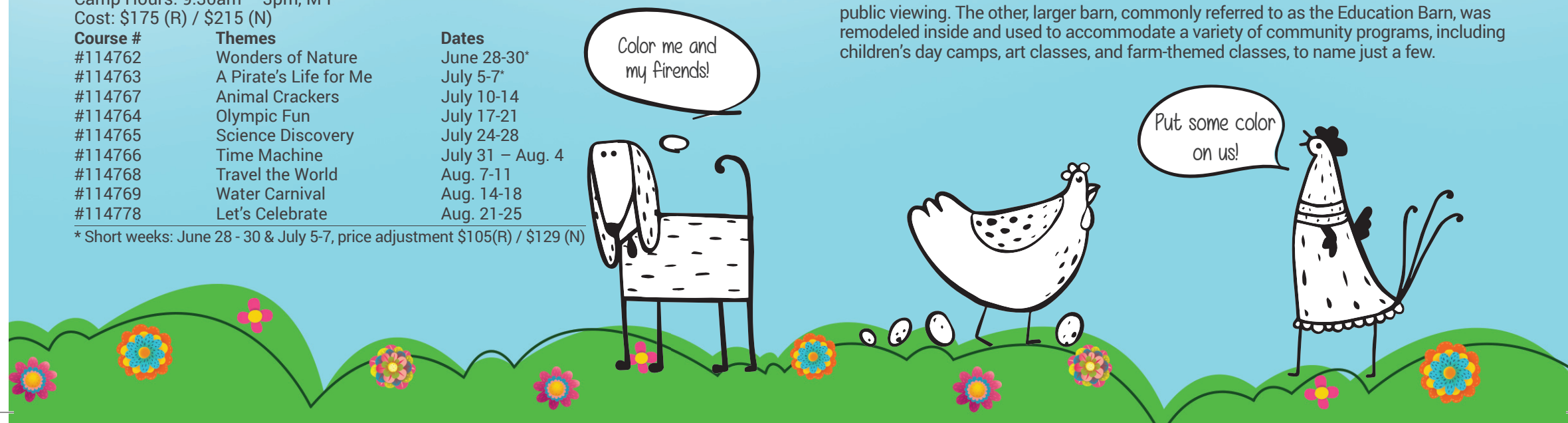
✿ FARM HISTORY

The farm's history began in 1921, when the Duey Family rented 190 acres and began delivering cream and butter stamped with the name Twin Valley Farm. In August of 1933 the original barn burned. Mr. Duey, a skilled carpenter, along with some hired hands rebuilt the barn in two weeks. Today, this barn is the smaller of the two barns and is called the Animal Barn. Mr. Duey also built the Red Barn, originally used as a milk house.

The second dairy barn was built in 1943-44 by Mr. Michaels, the new owner, (this is the north barn now known as the Education Barn) and the dairy herd was increased in size. After the end of WWII, he sold the farmstead to Ray and Nettie Fisher. The Fishers phased out the dairy operation and began raising Hereford beef cattle. They built the current farm house in 1954 and moved to live on the property.

In 1968 neighbors to the farm began a movement to petition the Bellevue City Council to purchase the property and secure it as a public park. The neighbors' petition succeeded and the City negotiated with the Fisher family to purchase the 80 acres, including the farm house, barns and out buildings. The Fishers sold their farm property to the City at a price much reduced from what they knew that they could get from developers. They did so because they believed in preserving the beauty and legacy of the agricultural buildings and the land.

In 1972 the oldest barn was modified to house an assortment of farm animals for public viewing. The other, larger barn, commonly referred to as the Education Barn, was remodeled inside and used to accommodate a variety of community programs, including children's day camps, art classes, and farm-themed classes, to name just a few.



✿ ADDITIONAL FARM ACTIVITIES

✿ Farm Parties

Celebrate your child's special day with a visit to the farm! Meet our goats, sheep, rabbits, pig, and ponies, then create your own wooly sheep to take home. Party packages include one hour tour/craft time and one hour room rental. Parties are limited to 30 children and/or adults. Children under 2 are no additional charge.

Ages: 2-11

Cost: Up to 15 children \$165 (R) \$180 (N)

Additional Children \$6 each

✿ Farm Tours for Schools and Groups

Experience the Farm with a tour designed specifically for groups. Tour themes vary by season as described below. Tours are available weekdays and are approximately one hour in length.

Ages: 2+

Cost: \$90 for 15 or fewer people (children & adults). Additional attendees: \$6 per child & \$2.50 per adult. Staff are free.

✿ Kids on the Farm Group Tour

Available December to April and June to September

Explore our farm with hands-on fun as you meet our goats, sheep, rabbits, chickens and ponies. Learn interesting animal facts then move inside to experience the old-fashioned skill of wool carding. Children create fuzzy sheep to take home.

✿ Springtime in the Barnyard Group Tour

Available May only

Welcome springtime with a tour of our animals, which may include chicks, goat kids, piglets and a calf. Learn about their special care then finish up with a walk through the garden.

✿ Fall at the Farm Group Tour

Available October Only

Experience harvest season in a traditional way. Work on barn "chores" with child-sized pails and rakes. Children finish up by choosing a pumpkin from our harvest-themed indoor pumpkin patch! Extra fee for pumpkins.

✿ Pioneer Days Group Tour

Available November only

Imagine life in the 1880's in our authentic log cabin. Children participate in activity stations learning to grind wheat and coffee, churn butter, hammer nails, pump water, play dress-up, and engage in more living history skills.

✿ Go Go with Van Gogh Art Camp

Celebrate individual creative expressions through exploration of multi-medias. Paint with colorful acrylics, sketch on the farm, develop watercolor style with color theory exploration, sculpting with molding clay, create collages, and use of oil pastels too. Instructor Diane Culhane is a renowned artist in the Pacific Northwest with a Master's Degree in Art Education. Extended care available 7:30am-5:30pm.

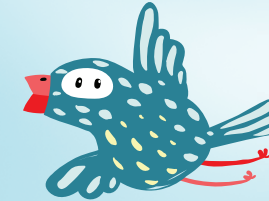
Ages: 6-11

Camp Hours: 9:30am-3pm, M-F

Cost: \$275 (R) \$330 (N)

Course #	Dates
114789	June 28-30*
114791	July 5-7*
114790	July 10-14
114792	July 17-21
114794	July 31 – Aug. 4
114795	Aug. 7-11
114796	Aug. 14-18
114810	Aug. 21-25

* Short weeks: June 28 - 30 & July 5-7, price adjustment \$165(R) / \$198 (N)



✿ Cartooniversity Day Camp

Explore the art of cartooning in depth with local Editorial Cartoonist and Humorous Illustrator, Jeff Johnson. Areas of study include character development, expressions, directional views, action poses, backgrounds, perspective and lettering. Daily projects include blank puzzles, flip-book animation, character profiles, comic strips and more! All supplies included.

Ages: 9-14

Camp Hours: 10am-3pm, M-F

Cost: \$300 (R) \$360 (N)

Course #	Dates
110913	Aug. 21-25
110914	Aug. 28-30*

* Short week: Aug 28-30, price adjustment \$180 (R) / \$216 (N)

✿ Foundations of Horsemanship

Designed for first time riders with Kelsey Creek Farm and Western Sky Horsemanship. This camp, instructed by Dale Rumens-Partee will focus on grooming, saddling, basic groundwork, trail riding adventures and arena riding as well. Great introduction to build confidence and knowledge of horses for your child.

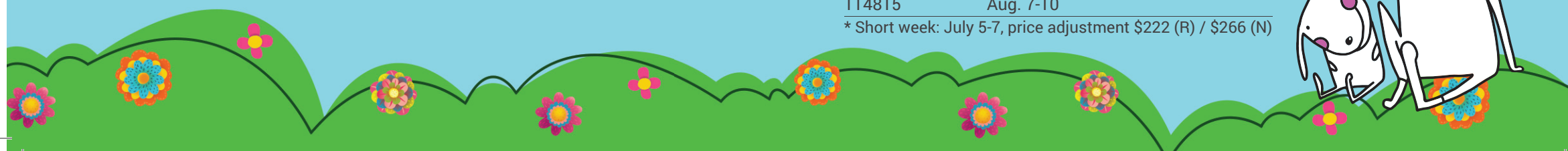
Ages: 7-14

Camp Hours: 9-11 am

Cost: \$296 (R) \$356 (N)

Course #	Dates
114812	July 5-7*
114813	July 10-13
114814	July 17-20
114821	Aug. 1-4
114815	Aug. 7-10

* Short week: July 5-7, price adjustment \$222 (R) / \$266 (N)



🌿 Classic Horsemanship

Welcome returning 2016 student! Instructor, Dale Rumens-Partee will review skills and continue to develop balance, groundwork skills and independent seat while riding. Students will ride on trails and in the arena with an obstacle course.

Ages: 8-16
Camp Hours: 12 – 2pm
Cost: \$296 (R) \$356 (N)

Course #	Dates
114820	July 5-7*
114817	July 10-13
114818	July 17-20
114826	Aug. 1-4
114824	Aug. 7-10

* Short week: July 5-7, price adjustment \$222 (R) / \$266 (N)

🌿 Pony Camp

Are you crazy for ponies? Come experience a full week packed with pony activities at Kelsey Creek Farm. Assist in grooming, saddling, care and feeding. This week's camp will include: pony rides, equine craft projects and games. End the week with a tractor-pulled wagon ride and western style cookout.

Ages: 5-7
Camp Hours: 9:30am – 3pm
Cost: \$325 (R) \$375 (N)

Course #	Dates
114721	Aug. 21 - 25

🌿 Little Farmers Mini Camp

Explore life on the farm. Campers will meet Kelsey Creek's resident farm animals and make them treats. Create crafts and play games in this special half-day camp with Jayne Ash. She combines 25 years of early childhood education experience with her knowledge of animals to actively engage children in the joys of farm life.

Ages: 4-6
Camp Hours: 10am-1pm , M- F
Cost: \$155 (R) \$167 (N)

Course #	Dates
115208	June 13 – 16*
115213	June 19 – 23
115209	June 26 - 30
115210	July 17 - 21
115211	July 31 – Aug. 4
115212	Aug. 7 - 11

Short week: July 13 - 16, price adjustment \$125 (R) \$137 (N)

🌿 Log Cabin Mini Camp

Imagine life without electricity, cars and hot water faucets. Instructor, Jayne Ash combines 25 years of early childhood education experience with her knowledge of animals to actively engage children in the joys of farm life. Grind wheat and coffee, churn butter, hammer nails and play dress-up. Add in crafts and games to create special memories of a life long ago.

Ages: 4-6
Camp Hours: 10am-1pm , M-Th
Cost: \$125 (R) \$137(N)

Course #	Dates
115215	July 5 - 7*
115214	July 10 - 13

Short week: July 5 - 7, price adjustment \$94 (R) \$103 (N)



🌿 Group Guitar Lessons

This course will teach guitar lessons in a 50 minute classroom setting for both beginners and those with some experience. By the end of the course the student should have mastered the following: All basic (open chords, dominant 7 chords, and barre chords; Major and minor scales in all positions on the guitar neck; Memorized every note on the neck of the guitar; Be comfortable with alternate picking; Know and understand the building blocks of most blues and rock songs; Be able to play a selection of well-known popular songs. Music theory will be introduced (painlessly!) at appropriate points during the course to create those 'ah-ha!' moments which provide students a true understanding of music. Private lessons are also available; \$40/40 minutes; Call Ed Carlson to schedule; 425-503-9054

Ages: 11+
Hours: 10am – 10:50am , Sat.
Cost: \$100 (R) \$120 (N)

Course #	Dates
#114723	May 6-27
#114724	June 3-24
#114725	July 8-29
#114726	Aug. 5-26
#114727	Sept. 9-30

🌿 Teen Volunteer Programs

A variety of opportunities to serve your community at an amazing and memorable park. Specific volunteer opportunities include: Farm, Art, Equine, Log Cabin, Little Farmers classes.

Ages: 12 – 18
Cost: \$15 (R) \$18 (N)

